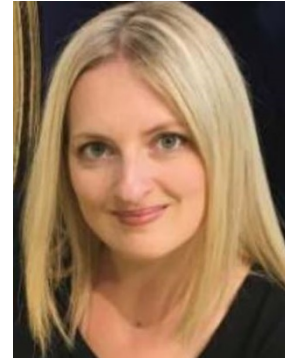


Champlain LHIN Complex Respiratory Care Program in Primary Care - Bringing Health Care Home

Presenters: Emily McMullen, RRT, CRE, CTE;
Carlie Brown, RRT FCSRT

September 30, 12:00 PM Eastern



Session Abstract

The Complex Respiratory Care Program is a community-based program which helps clients with complex respiratory issues integrate back into the community from both the acute and sub acute care setting.

Services are provided by a Registered Respiratory Therapist. The Complex Respiratory Care Program provides assessment, in home trach tube changes, training and education to medically stable clients with tracheostomy or ventilator-assisted individuals and their families using a variety of tools. The RRT provides routine follow up and ongoing support to the client while in the community. In addition, the RRT will work with the discharging facility to promote a safe and successful discharge to home or community living. The program offers education on an individual basis or in group workshops to clients, caregivers, healthcare professionals and family members.

Session Objectives

1. Describe how the Complex Respiratory Care program was introduced into primary care at a Somerset West Community Health Center.
2. Describe the resources developed by the Complex Respiratory Care program.
3. List the services provided, eligibility criteria, and the geographical area serviced by the program. Listen to a patient story of transitioning from hospital to home.
4. Describe the successes and challenges of a community based program. Describe the current activities and next steps.

Speaker Biographies

Emily McMullen has 18 years of clinical experience as a Respiratory Therapist working in various roles in acute care and complex continuing care. In 2009, she developed a keen interest in chronic long term ventilation, and focussed much of her time towards this unique patient population within a complex continuing care facility. In 2018, Emily began working with Somerset West Community Health Centre to develop the Complex Respiratory Care Program. This program offers community-based in-home support to patients requiring chronic ventilation, either invasively or non-invasively, individuals requiring tracheostomy tubes or complex respiratory needs, as well as working with local hospitals to successfully discharge patients from hospital to home. The Complex Respiratory Care program focuses on providing ongoing education to patients, caregivers, and staff to enable these individuals to safely live in their home or community setting.

Carlie Brown is a Pediatric Registered Respiratory Therapist Fellow and Case Manager of the Home Ventilation Program at the Children's Hospital of Eastern Ontario (CHEO). Carlie has extensive expertise in Sleep and Respiratory Medicine and care of medically fragile/technologically dependent children. In 2018, Carlie joined Somerset West's Complex Respiratory Care Program to provide continuity of care for pediatric patients transitioning over to the adult model of care. Carlie leads numerous quality improvement initiatives and research studies with the goal of improving patient and caregiver safety and experience.